

**VOCATIONAL**



**CHASSIS EXTENDED SERVICE CONTRACT OPTIONS**



## COVERAGE COUNTS

In business, it's all about reliability. Your customers rely on you to deliver for them, and in turn, you rely on your equipment to deliver for you. Time after time. Mile after mile. That's why we design every one of our International® trucks to provide you the productivity and dependability you demand.

And not only are they backed by our initial comprehensive warranty, you can now protect your investment for years down the road with an Extended Warranty tailored to the specific needs of your business. Because at International Truck, our goal is to keep you — and your business — moving forward.



# EXTENDED WARRANTY

Because no two businesses are the same, we offer coverage options that meet a wide variety of applications and duty cycles. In other words, with our International<sup>®</sup> Truck extended warranty coverage, you get the flexibility you need with the peace of mind you deserve.

- All plans come with guaranteed \$0 deductible, 100% parts and labor coverage, and NO claim maximums
- Our broad range of customizable service contracts allows customers to choose the coverages most important to them. Plus, all extended service contracts are available in a variety of month / mileage combinations. Ask your dealer for details
- Our extensive International Truck dealer network, combined with our exclusive partnership with Love's Travel Stops, offers the industry's largest service network

---

## PICK THE COVERAGE YOU NEED.

Depending on how you use your trucks or your past experiences, you may only want to choose specific coverage. With the International Truck extended warranty, you can do that, or simply choose complete extended vehicle coverage for total peace of mind.

---

## PRE-PACKAGED COMPONENTS PACKAGES FOR VOCATIONAL MODELS



### VOCATIONAL CAB

- Air Deflector Mount
- Air Intake Baffle
- Arm Rest
- Bunk Components
- Cab Harness
- Cab Mounting
- Cab Mounting Crossmember
- Cab Shock Absorber & Mounting
- Cab Step
- Cab Tilt Lock & Hinge
- Cabinets
- Console
- Control Valve
- Cowl Tray
- Cowl/Firewall/SC or FC Platform
- Door, Assembly & Trim
- Engine Access Door
- Engine Compartment Insulation
- Engine Doghouse Panel Latch
- Exterior Mirror Motor, Heater, Bracket
- Front Hood Mounting Bracket
- Glass Run Channel
- Grab Handle
- Grille Assembly
- Head or Tail Lamp Bezel
- Hinge
- Hood
- Insulation
- Interior Trim
- Latch and Exterior Handle
- Lift Cylinder
- Map Pocket
- Mirror
- Mirror Light
- Panels
- Radiator Access Door
- Rear Trim Panel
- Rivet/Fastener
- Roof
- Seal
- Sealant
- Shore Power Connection
- Sill
- Sleeper Window
- Sound Shield
- Structure
- Sub-Frame
- Sun Shade
- Sun Visor
- Sunshade Mounting Bracket
- Vent Window and Seal
- Ventilator
- Weld
- Window Regulator and Handle
- Wiper Fascia

### VOCATIONAL FRAME

- Crossmember
- Engine Crossmember
- Frame Side Rail
- Reinforcement Or Gussets

## PRE-PACKAGED COMPONENTS - Choose one or more component coverage categories



### COOLING SYSTEM

- 4-Way Coolant Manifold
- Charge Air Cooler & Pipe
- Coolant Control Valve
- Electronic Fan Controller
- Fan Blade Assembly
- Fan Clutch Control
- Fan Drive & Pulley
- Fan Shaft & Mounting
- Fan Solenoid & Temp Switch
- Hydraulic Pump/Motor/Reservoir
- In-Tank Oil Cooler
- Oil-to-Air Cooler
- Radiator Shroud, Hoses, Surge Tank
- Shutter Control Components
- Thermostat Housing
- Water Pump



### ELECTRICAL

- Accident Avoidance Radar System
- Horn Components
- Axle Electrical Components
- Body Control Module
- Cab Harness
- Defroster
- Electrical Charging System Components
- Fifth Wheel Electrical Components
- Flasher
- Headlights/Spotlights/Fog Lights/Tail Lights/Parking Lights
- Instrument Panel
- Interior Lighting & Switches
- Power Window Components
- Remote Power Module
- Sensors
- Starter Relay
- Telematics
- Trailer Lighting Switch & Cab Harness
- Turn Signals
- Warning Lights



### STARTER / ALTERNATOR

- Alternator
- Voltage Regulator
- Starter Motor & Solenoid
- Clutch Switch
- Clean Power Cable (Battery To Cab)
- Clean Power Cable (Battery To Engine Connect)
- Clean Power Cable (Battery To Transmission)
- Battery Jumper Cable
- Relay/Magnetic Switch
- Switch, Key/Ignition
- Switch, Push Button Starter
- Switch, Neutral Start
- Module Monitor
- Low Oil Pressure Switch
- Harness, Cab Wires Conn's & Terminals
- Harness, PDM Distribution
- Alternator Pulley
- Battery Run Down Protection Monitor



### HVAC

- Defroster
- A/C Compressor Bracket
- A/C Compressor/Clutch
- A/C Condenser
- Heater Core
- Evaporator
- Blower Motor & Wheel
- A/C Dryer
- A/C Expansion Valve
- A/C System Components
- HVAC Actuator



### AXLES / PROPSHAFT

- Steering Arm
- Front Axle I-Beam
- Front Axle Components
- Prop Shaft
- Prop Shaft Components
- Transfer/PTO Case
- Rear Axle Components
- Rear Axle Carrier
- Rear Axle Housing
- Rear Axle Gears
- Rear Axle Differential
- Rear Axle Shaft
- 2-Spd Rear Axle Components
- Lift Axle Components

## Extended Vehicle Coverage

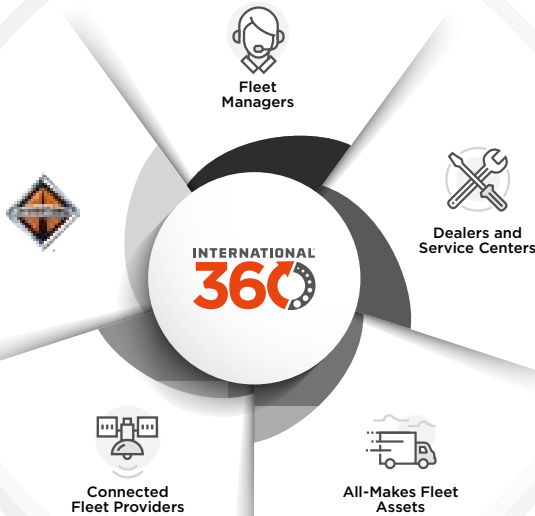
Includes all of the above PLUS these additional components:

**Frame and Bumper**  
**Braking System**  
**Clutch**

**Transmission**  
**Fuel System**

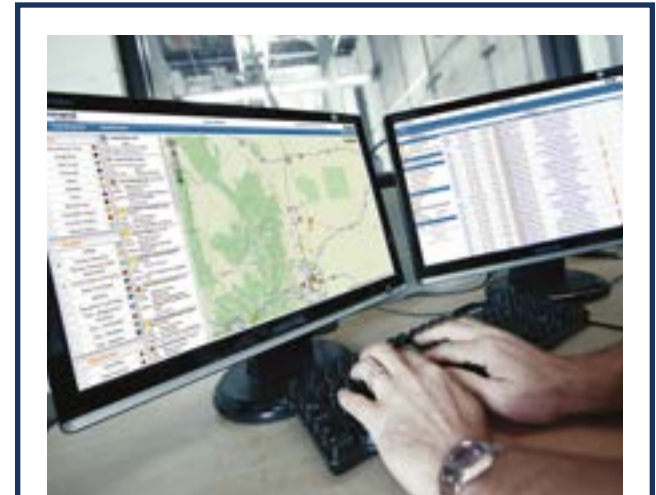


# ASK YOUR DEALER ABOUT WAYS TO PACKAGE YOUR EXTENDED SERVICE CONTRACT WITH THESE OTHER SOLUTIONS FROM INTERNATIONAL® TRUCK



## INTERNATIONAL® 360

International® 360 is a ground-breaking service communication and fleet management platform that accelerates the repair process, streamlines communication, is easy to use, and drives greater uptime.



## Preventive Maintenance Packages

Let our team of highly-skilled technicians help maximize the efficiency and lifespan of your fleet.



## Extended Towing Coverage

Protects you and reduces out-of-pocket expenses in the event of an emergency breakdown.



## OnCommand® Connection

OnCommand® Connection telematics and Advanced Remote Diagnostics provide actionable insights to help maintain the health and safety of your fleet.

WE HAVE YOUR BACK SO YOU CAN KEEP MOVING FORWARD

International Truck offers one of the broadest and most capable parts distribution and dealer networks in the industry. Every International dealer is committed to delivering the expert care you need to get back on the road.



DIAMOND EDGE<sup>SM</sup> CERTIFIED INTERNATIONAL<sup>®</sup> TRUCK DEALERS

This select network of International dealer service departments has passed rigorous parts and service certification guidelines to provide you with faster turnarounds, immediate parts availability and a higher level of servicing expertise. Their ongoing pledge is to maximize your uptime and deliver a best-in-class customer experience.



Our Love's partnership has resulted in an additional 500+ service bays and 1000+ additional factory-trained and certified technicians

YES, WE'RE  
**OPEN**

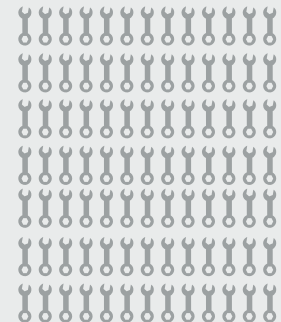
Saturday  
**488**  
Locations

Sunday  
**47**  
Locations

**9,700+**  
TECHNICIANS



**7,600+**  
SERVICE BAYS



So no matter where you drive,  
you're not far from one of our

**720+**

DEALER LOCATIONS

Leading all competitors in

