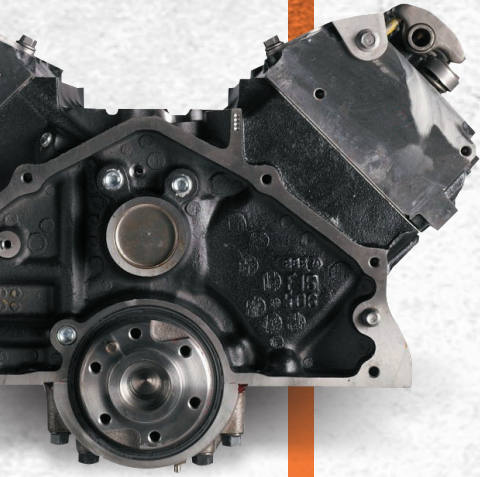


EQUIPPED FOR UPTIME



# ALL-MAKES

## TRUCK AND BUS PARTS

DRIVE UPTIME FORWARD WITH MORE THAN **700,000** QUALITY ALL-MAKES PARTS, ALL FROM ONE SOURCE.

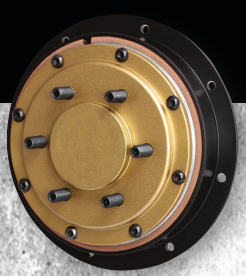




# YOUR SOURCE FOR UPTIME

LOOKING TO GET THE BEST QUALITY PARTS FROM BRANDS YOU CAN TRUST — QUICKLY AND EASILY?

Look no further than International®. Count on our nationwide dealer network for an extensive inventory of quality all-makes parts to help you maximize uptime — no matter what you drive.



## ACCESSORIES & CHEMICALS

ABSORBENTS	<b>Fleetrite</b> , MSC, Sosmetal
ADDITIVES, FUEL, COOLING & AIR SYSTEMS	E-ZOIL <sup>†</sup> , <b>Fleetrite</b> , Gold Eagle, Kleen-Flo <sup>†</sup> , Lucas, PEAK, Penray, Power Service Products*, Radiator Specialty
ADHESIVES & SEALANTS	Loctite, Permatex, Radiator Specialty
ANTIFREEZE/COOLANT – EXTENDED LIFE	Chevron, Fleetguard, <b>Fleetrite</b> , Phillips 66, Shell
ANTIFREEZE/COOLANT – SCA	Chevron, Fleetguard, <b>Fleetrite</b> , Phillips 66, Shell
BATTERY CHARGERS	Midtronics
BODY REPAIR	Sosmetal
BRAKE FLUIDS	<b>Fleetrite</b> , Gold Eagle, Kleen-Flo <sup>†</sup> , Penray, Radiator Specialty
BUG DEFLECTORS, BUG SHIELDS	Belmor, Dieter's
BUG SCREENS & ROCK GUARDS	Belmor, Roadmaster
CLEANERS, SOLVENTS & DEGREASERS	Chevron, Fleetguard, <b>Fleetrite</b> , Kleen-Flo <sup>†</sup> , Loctite, Penray, Permatex, Radiator Specialty, Shell
DECK PLATES, SADDLE BOXES, TOOL BOXES, FRAME STEPS	Fleet Engineers, <b>International</b> , Merritt, Road Gear*
DIESEL EXHAUST FLUID (DEF) & EQUIPMENT	<b>Fleetrite</b>
ELECTRICAL HAND-HELD SPOTLIGHTS	Grote, Truck-Lite
FENDERS	Fleet Engineers, Fleetline, <b>International</b> , Merritt, Metchro, Nu-Line, Road Gear*
FIFTH WHEELS	Fontaine, JOST, SAF Holland
FIRE EXTINGUISHERS	Amerex, <b>International</b> , Kidde
FIRST-AID KITS	Certified Safety, J.J. Keller, MSC
FLASHLIGHTS & BATTERIES	MSC, Pana-Pacific, Sosmetal
FUEL ANTI-SIPHON DEVICES	Velvac
FUEL CATALYSTS	<b>Fleetrite</b> , Kleen-Flo <sup>†</sup> , Krown, Power Service
FUSES	BSP, Cole Hersee, Cooper, <b>International</b> , Velvac
GRAB HANDLES	<b>Fleetrite</b> , Nelson
HORN COVERS	<b>Fleetrite</b> , <b>International</b>
HUBCAPS, WHEEL COVERS & LUG NUT COVERS	Alcoa, American Chrome, Meritor, Phoenix USA*, RealWheels, Roadmaster, SKF
HUBDOMETERS	Stemco, Triseal
HVAC REFRIGERANT	Atralyn <sup>†</sup> , Weitron*
HYDRAULIC JACKS & JACK STANDS	<b>Fleetrite</b> , Gray Mfg., Omega
JUMPER CABLES	<b>Fleetrite</b>
LIGHT BARS	American Chrome, Dieter's, Federal-Mogul, <b>Fleetrite</b> , Grote, Pana-Pacific, Panelite, Roadmaster, Truck-Lite
LUBE/PENETRANTS	<b>Fleetrite</b> , Krown by SKF, Radiator Specialty
MIRRORS: HEATED, REMOTE CONTROL & CONVEX	Beach, Cham-Cal, <b>Fleetrite</b> , Grote, Mirror Lite, Moto Mirror, Rosco, Truck-Lite, Velvac
MUDFLAPS/SPLASH GUARDS	AeroPro, Fleet Engineers, <b>International</b> , Koneta, POLY-JEC
MUDFLAP BRACKETS, WEIGHTS, HOLD-DOWNS & EMBLEMS	American Chrome, Betts Spring, Fleet Engineers, Fleetline, Nuline, Roadmaster
PAINT	Gold Eagle
PAPER RAGS	<b>Fleetrite</b> , Kimberly-Clark, MSC, Sosmetal
PINTLE HOOKS, TOW HOOKS	Fontaine, JOST, SAF Holland
POLISHES & WAXES	<b>Fleetrite</b> , Gold Eagle, Krown, Permatex, Shell
PORTA POTTIES	Thetford/Norcold
POWER STEERING FLUID	Chevron, <b>Fleetrite</b> , Gold Eagle, Penray, Petro-Canada, Phillips 66, Shell
PRIVACY CURTAINS	<b>International</b>
QUARTER FENDERS	Fleet Engineers, Fleetline, <b>International</b> , Nu-Line
REFLECTIVE TAPE/REFLECTORS	3M*, Grote, Reflexite*, Safe-Lite*, Truck-Lite

\* U.S. SUPPLIER ONLY

† CANADA SUPPLIER ONLY

## ACCESSORIES & CHEMICALS (CONTINUED)

SEAT CUSHIONS	Bostrom Seating, <b>International</b> , National Seating, Sears Seating*, Seats Inc.
SHOP TOOLS, SHOP SUPPLIES	<b>Fleetrite</b> , MSC, Shinn Fu (Omega), Sosmetal, SPX
STAINLESS STEEL ACCESSORIES	American Chrome, Dieter's, <b>Fleetrite</b>
SUN VISORS	Dieter's, <b>International</b>
THREADLOCKERS	Loctite, Permatex
TIRE CHAINS, BINDERS, TIE-DOWN CHAINS	Onspot, Peerless, Pewag
WARNING TRIANGLES, BREAKDOWN KITS	Cortina, <b>International</b> , Safelite
WHEEL CHOCKS	Fleet Engineers, <b>International</b> , Koneta, Martec
WINDSHIELD WASHER SOLVENT	<b>Fleetrite</b> , Gold Eagle, PEAK
WINTERFRONTS	Belmor, Roadmaster

## BRAKE: AIR

ABS & TRACTION CONTROL	Bendix, Haldex, Meritor, WABCO
AIR BRAKE FRICTION	Bendix, <b>Fleetrite</b> , <b>Fleetrite Abex</b> , Haldex, Meritor
AIR DRYERS & CARTRIDGES	Bendix, <b>Fleetrite</b> , Haldex, Meritor, WABCO
AIR TANKS	Bendix, Haldex, <b>International</b>
BRAKE CHAMBERS	Bendix, <b>Fleetrite</b> , Haldex, Meritor, MGM
COMPRESSORS	Bendix, <b>Fleetrite</b> , Haldex, Meritor, WABCO
DRUMS	ConMet*, <b>Fleetrite</b> , Gunita, <b>International</b> , Meritor, Motor Wheel, Webb
LINES, CABLES & GLADHANDS	Bendix, Bendix Spicer, <b>Fleetrite</b> , Grote, Haldex, Meritor, Parker Stratoflex, Philatron, Phillips, Sloan, Tectran, WABCO
S-CAMS	Bendix, <b>Fleetrite</b> , Haldex, Hendrickson, Meritor
SLACK ADJUSTERS	Bendix, <b>Fleetrite</b> , Gunita, Haldex, Meritor
VALVES, GOVERNOR	Bendix, <b>Fleetrite</b> , Haldex, Meritor, WABCO

## BRAKE: HYDRAULIC

ABS	Bendix, <b>Fleetrite</b> , Meritor, WABCO
HYDRAULIC BRAKE FRICTION	Bendix, <b>Fleetrite</b> , Haldex, Meritor, Performance Friction
HYDROVACS, NEW & REMAN	Bendix, Haldex, <b>International</b>
MASTER CYLINDER & OVERHAUL KITS	Bendix, <b>Fleetrite</b> , Haldex, <b>International</b>
ROTORS	Bendix, <b>Fleetrite</b> , Gunita, Hendrickson, <b>International</b> , Meritor, Performance Friction, Webb
WHEEL CYLINDERS/OVERHAUL KITS/CALIPERS	Bendix, <b>Fleetrite</b> , Haldex, Hendrickson, Meritor, Stemco

## BUS

ACCESSORIES	Belmor, Custom Radio, REI, Ventech LHG
GLASS	<b>Fleetrite</b> , Lippert
LIGHTING	J.W. Speaker, Sound Off, Weldon
MIRRORS	Mirror Lite, Rosco
SAFETY	Amerex, Certified Safety, Kidde, MSC, Specialty Mfg. Inc., Tie Tech, Transpec
SEAT COVERS, FOAM, RESTRAINTS	Besi, C.E. White, Foam Rubber Products, HSM Transportation Solutions, IMMI, Q-Straint, Sure-Lok, Triad Fabco

## CAB & HOOD, FRAME/ATTACHMENTS

AIR SHIELDS/AERODYNAMIC DEVICES	<b>International</b>
BATTERY BOXES & COVERS	<b>International</b> , Merritt
BUMPERS	<b>Fleetrite</b> , Hendrickson, <b>International</b>
CAB FILTERS	Cab Fresh Filter Co.*, <b>Fleetrite</b>
CAB SUSPENSION SYSTEMS	Firestone, Goodyear, Link
CABS	<b>International</b>

## CAB & HOOD, FRAME/ATTACHMENTS (CONTINUED)

COLLISION PARTS	<b>Fleetrite, International</b>
FLOOR MATS/CARPETING	<b>International</b>
FUEL TANKS & COMPONENTS	<b>International</b> , Proform Industries
GLASS	Duncan, <b>Fleetrite</b> , Guardian, PPG
GRILLES	<b>Fleetrite, International</b> , Retrac
GRILLE GUARDS	Link Manufacturing, S&V Manufacturing <sup>†</sup>
HEATING, A/C SYSTEMS & COMPONENTS	Bergstrom, <b>Fleetrite</b>
HOOD GLOVES/HOOD HANDLES	<b>Fleetrite, International</b>
HOODS	<b>Fleetrite, International</b> , Jones Performance
HORNS	American Chrome, <b>International</b> , Roadmaster
INSTRUMENTS & CABLES	D & D Instruments, ISSPRO, Sloan Transportation, Stoneridge
MATTRESSES	CVG, Estee, <b>Fleetrite, International</b>
SEATS & ARM RESTS	Bostrom, <b>International</b> , National Seating, Sears Seating, Seats Inc.
WIPER MOTORS, BLADES & ARMS	ANCO, <b>Fleetrite, International</b> , Sprague, TRICO

## ELECTRICAL

ALARMS	Audiovox, <b>Fleetrite</b> , Pana-Pacific
ALTERNATORS	Bosch, Delco Remy, DENSO, <b>Fleetrite</b> , Leece-Neville, Mitsubishi
ANTENNAS & MOUNTS	Audiovox, Pana-Pacific
BACK-UP ALARMS, STROBES	<b>Fleetrite</b> , Grote, Pana-Pacific, Velvac
BATTERIES	East Penn, Exide, <b>Fleetrite</b>
BATTERY WARMERS	Phillips & Temro
CB RADIOS, CD PLAYERS & CHANGERS	Audiovox, <b>Fleetrite</b> , Pana-Pacific
CIRCUIT BREAKERS	Cole Hersee, Tectran, Velvac
CLOCKS	Pana-Pacific
COILED ELECTRICAL CABLES	<b>Fleetrite</b> , Grote, Philatraton, Phillips
DRIVING LIGHTS	Grote, J.W. Speaker, Truck-Lite
ELECTRONIC IGNITION/IGNITORS	Echlin, Per-Lux
EMERGENCY LIGHTS	Federal Signal, Grote, Pana-Pacific, Peterson, Truck-Lite
FLASHERS	Federal Signal, <b>Fleetrite</b> , Grote, <b>International</b> , Pana-Pacific, Peterson, Truck-Lite
FUSES & CIRCUIT BREAKERS	Cole Hersee, Littelfuse, Velvac
GLOW PLUGS	<b>International</b>
IGNITION COMPONENTS	<b>International</b>
JUNCTION BOXES	Cole Hersee, Phillips, Velvac
MINIATURE BULBS	<b>Fleetrite</b> , Tungsram
PILOT LIGHTS	Cole Hersee, Phillips, Tectran
PLUGS & RECEPTACLES	Cole Hersee, Grote, Phillips, Tectran
POWER INVERTERS/CHARGERS	AVS Technologies, Bergstrom, Pana-Pacific
RADIOS, TAPE PLAYERS & SPEAKERS	Audiovox, AVS Technologies, Custom Radio, <b>Fleetrite</b> , Pana-Pacific
REFLECTORS	Grote, Truck-Lite
REFRIGERATORS	Pana-Pacific, Thetford/Norcold
REGULATORS, NEW & REMAN	Delco Remy
REPLACEMENT LIGHT FIXTURES	Grote, Truck-Lite
SEALED BEAMS	Grote, Truck-Lite, Tungsram
SHOP LIGHTS	Grote, Truck-Lite, Tungsram
SOLENOIDS	Cole Hersee, Delco Remy, <b>RENEWED</b>
SPARK PLUGS	Federal-Mogul
STARTERS	Delco Remy, DENSO, <b>Fleetrite</b> , Leece-Neville, Mitsubishi

## ELECTRICAL (CONTINUED)

SURVEILLANCE SYSTEMS	Audiovox, Pana-Pacific, REI
SWITCHES & RELAYS	Cole Hersee, Fasco, ISSPRO, Sloan Transportation, Stoneridge, Tectran, Velvac
TELEVISIONS & MICROWAVES	Pana-Pacific
TERMINALS & CONNECTORS	AMP, BSP, Cole Hersee, Grote, Phillips, Tectran, Velvac
WIRING HARNESSSES	<b>International</b> , Stoneridge

## ENGINE

AFTERTREATMENT COMPONENTS	DuraFit, <b>International</b> , <b>RENEWED</b>
AUXILIARY HEATERS	Espar, Webasto
BLOCK HEATERS	Arctic Fox, <b>International</b> , Phillips & Temro, ZeroStart
CHARGE AIR COOLERS	<b>Fleetrite, International</b> , Spectra Premium
CONDENSERS	<b>Fleetrite, International</b> , Red Dot
DIESEL ENGINES, NEW & REMAN & FORD REMAN	<b>RENEWED</b>
DPF CLEANING MACHINES	FSX
ENGINE BRAKES	Jacobs, Pacbrake
ENGINE OVERHAUL COMPONENTS & KITS	<b>Fleetrite</b> , Interstate-McBee, <b>RENEWED</b>
ETHER & ETHER STARTING KITS	<b>Fleetrite</b> , Phillips & Temro
EXHAUST BRAKES	Jacobs, Pacbrake
FAN CLUTCHES & CONTROLS, NEW & REMAN	BorgWarner/Kysor, <b>Fleetrite</b> , Horton
FUEL HEATERS	Arctic Fox, Phillips & Temro
FUEL PUMPS, GAS & DIESEL, NEW & REMAN	<b>Fleetrite, International</b> , <b>RENEWED</b>
INJECTORS, INJECTION PUMPS, NEW & REMAN	<b>Fleetrite</b> , Interstate-McBee, <b>RENEWED</b>
NATURAL GAS SPARK PLUGS	Denso
OIL COOLERS, NEW & REMAN	<b>International</b> , <b>RENEWED</b>
OIL PUMPS, NEW & REMAN	<b>International</b> , <b>RENEWED</b>
RADIATORS	<b>Fleetrite, International</b> , Spectra Premium
SHUTTERS	<b>International</b> , <b>RENEWED</b>
THERMOSTATS	Caltherm, <b>International</b> , Interstate-McBee
TURBOCHARGERS, NEW & REMAN	BorgWarner Turbo, <b>Fleetrite, International</b> , <b>RENEWED</b>
WATER PUMPS, NEW & REMAN	<b>Fleetrite, International</b> , <b>RENEWED</b>

## MAINTENANCE

AIR FILTERS	Baldwin, Fleetguard, <b>Fleetrite</b> , Hengst, Luber-Finer
BEARINGS	Federal-Mogul, <b>Fleetrite</b> , NTN, SKF, Timken
BELTS	<b>Fleetrite</b> , Goodyear
BRAKE CLEANERS	<b>Fleetrite</b> , MSC, Penray, Permatex, Radiator Specialty
CABIN AIR FILTERS	Cab Fresh Co., Fleetguard, <b>Fleetrite</b>
DEF FILTERS	Baldwin, Fleetguard, <b>Fleetrite</b>
DIESEL EXHAUST FLUID	<b>Fleetrite</b>
EXHAUST CLAMPS	<b>Fleetrite</b>
FLEXIBLE METAL TUBING	Donaldson, <b>Fleetrite</b> , Nelson
FUEL/WATER SEPARATORS	Fleetguard, <b>International</b> , Luber-Finer, Racor
FUEL FILTERS	Baldwin, Fleetguard, <b>International</b> , Luber-Finer
GREASE, PENETRANTS & LUBRICANTS	Chevron, <b>Fleetrite</b> , Gold Eagle, Krown, Lucas, Permatex, Petro-Canada, Phillips 66, Radiator Specialty, Shell
HEATER/RADIATOR HOSES	<b>Fleetrite</b>
HOSE CLAMPS	<b>Fleetrite</b> , Parker Hannifin, Weatherhead
HOSE FITTINGS	<b>Fleetrite</b> , Parker Hannifin, Stratoflex, Weatherhead
HOSES – MULTIPURPOSE	<b>Fleetrite</b> , Goodyear, Synflex, Weatherhead
HYDRAULIC OIL & COOLANT ANALYSES	Chevron, CYC, <b>Fleetrite</b> , Fleetguard, Penray, Shell
LUBE FILTERS	Baldwin, Fleetguard, <b>International</b> , Luber-Finer
MUFFLER HEAT SHIELDS	<b>Fleetrite</b> , Nelson

\* U.S. SUPPLIER ONLY

† CANADA SUPPLIER ONLY

## MAINTENANCE (CONTINUED)

MUFFLERS	Donaldson, <b>Fleetrite</b> , <b>International</b> , Nelson
OIL	Chevron, <b>Fleetrite-TOTAL</b> , Lucas Oil, Petro-Canada, PetroChoice, Phillips 66, Shell
PIPE: ALUMINIZED, CHROME OR STAINLESS STEEL	American Chrome, Donaldson, <b>Fleetrite</b> , Nelson
RAIN CAPS	Donaldson, <b>Fleetrite</b> , Nelson
SEAL CLAMPS, GUILLOTINE & FLAT BAND	Donaldson, <b>Fleetrite</b> , Torca
SEALS	<b>Fleetrite</b> , <b>International</b> , Meritor, National, SKF
STACKS	American Chrome, Donaldson, <b>Fleetrite</b> , Nelson, Roadmaster
SYNTHETIC GEAR OIL/AXLE LUBRICANTS	<b>Fleetrite</b>
WATER FILTERS	Baldwin, Fleetguard, Luber-Finer, Penray

## STEERING

POWER STEERING PUMPS	<b>International</b> , <b>RENEWED</b> , TRW
STEERING COMPONENTS	Dana Spicer, Meritor
STEERING GEARS & BOXES, NEW & REMAN	<b>International</b> , Meritor, <b>RENEWED</b> , R.H. Sheppard, TRW
TIE ROD ENDS, KINGPIN KITS & DRAG LINKS	Dana Spicer, <b>Fleetrite</b> , <b>International</b> , Meritor, Stemco
TORQUE RODS & BUSHINGS	ATRO, Dana Spicer, <b>Fleetrite</b> , <b>International</b> , Meritor, Stemco

## SUSPENSION PARTS

AIR SPRINGS	Firestone, <b>Fleetrite</b> , Goodyear
HEIGHT CONTROL VALVES	Barksdale, Hadley
LIFT AXLES	Hendrickson, Link, Watson & Chalin
SHOCK ABSORBERS	Gabriel, <b>International</b> , Monroe
SUSPENSION COMPONENTS	ATRO, Dana Spicer, Hendrickson, <b>International</b> , Meritor

## TRAILER PARTS

AXLES	Dana Spicer, Meritor
CAB GUARDS	Merritt, Road Gear
COVERING SYSTEMS	Donovan
CRANK HANDLES	Fontaine, JOST, SAF Holland
CRANKS (LANDING)	Fontaine, JOST, SAF Holland
CROSSMEMBERS	<b>International</b> , SAF Holland
DOCK BUMPERS	Koneta
DOORS & REPLACEMENT PARTS	Fleet Engineers
DOOR PANELS	Fleet Engineers
DRAWBARS	SAF Holland
DRIVER LOGS	J.J. Keller
FLAGS, WARNING	J.J. Keller
FUSES	Cole Hersee, Gleason, Littelfuse, Phillips, Tectran
GREASE/LUBRICANTS	Chevron, <b>Fleetrite</b> , Shell
INDICATING & WARNING DEVICES	Bendix
JACKS	<b>Fleetrite</b>
LABELS	J.J. Keller
LANDING GEAR	Fleet Engineers, Fontaine, JOST, SAF Holland
LIGHTING	<b>Fleetrite</b> , Grote, J.W. Speaker, Truck-Lite, Tungsram
LOAD LOCKS	Jones Mfg.
MUDFLAPS (RUBBER/PLASTIC)	<b>International</b> , James King, Koneta, POLY-JEC
PINTLE HOOKS	Fontaine, JOST, SAF Holland
PLACARDS	J.J. Keller, MSC
REFRIGERATION BELTS	<b>Fleetrite</b>

## TRAILER PARTS (CONTINUED)

SAFETY EQUIPMENT/FIRE EXTINGUISHERS	Amerex, James King, Kidde
SAND SHOES	Fleet Engineers, JOST, SAF Holland
SEALS	Bendix, <b>Fleetrite</b> , <b>International</b> , Meritor, NTN, SKF
SIGNS	J.J. Keller
STORAGE BOXES	Merritt, Road Gear
STRAPS	Kinedyne, Merritt
STRAP ASSEMBLIES	Kinedyne
SUSPENSIONS	Hendrickson
TARPS	Donovan
TIRE PRESSURE REGULATORS	Bendix, Link/Cabmate
TOOL BOXES	Merritt, Road Gear
TRAILER CABLES	<b>Fleetrite</b> , Grote, Philatron, Phillips, Tectran, Velvac
TRAILER SKIRTS	Fleet Engineers, Transtex
WHEEL END HARDWARE	Eaton, Haldex, Meritor, Spicer
WINCHES, WINCH BARS & WINCH STRAPS	Kinedyne

## TRANSMISSION/AXLE /DRIVELINE/PTOs

BEARING & SEAL KITS	Dana Spicer, Eaton, <b>International</b> , Meritor
CARRIER ASSEMBLIES, NEW & REMAN	Dana Spicer, <b>International</b> , Meritor
CENTER BEARINGS	Dana Spicer, Meritor
CLUTCH ASSEMBLIES, NEW	Eaton Fuller, <b>Fleetrite</b> , Meritor
CLUTCH ASSEMBLIES, REMAN	Eaton Fuller, <b>Fleetrite</b> , Meritor
CLUTCH BRAKES	Eaton Fuller, Meritor
DRIVING AXLE ASSEMBLIES & COMPONENTS	Dana Spicer, <b>International</b> , Meritor
POWER TAKE-OFFS (PTOs)	Bezares, Chelsea, Muncie Power
TRANSFER CASES	Dana Spicer, Meritor
TRANSMISSION ASSEMBLIES, REMAN	Eaton Fuller, <b>RENEWED</b> , Meritor, ZF-Freedomline
TRANSMISSION ASSEMBLIES & COMPONENTS, NEW	Eaton Fuller, <b>International</b> , Meritor, ZF-Freedomline
TRANSMISSION/AXLE/DRIVELINE/PTOs FOR DRIVELINE COMPONENTS	Dana Spicer, Meritor
U-JOINTS	Dana Spicer, <b>Fleetrite</b> , Meritor
YOKES	Dana Spicer, <b>Fleetrite</b> , Meritor

## VEHICLE SAFETY SYSTEMS

VEHICLE SAFETY SYSTEMS	Bendix Wingman, <b>Fleetrite</b> , Meritor, Pana-Pacific, Rosco, WABCO
------------------------	--

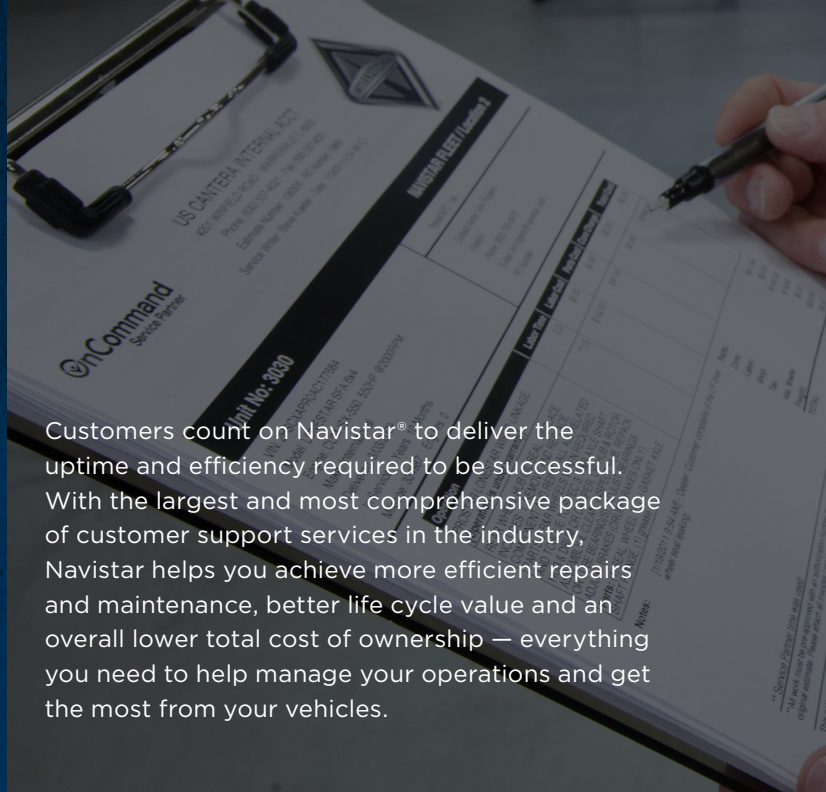
## WHEELS

TIRE PRESSURE MONITORING	Dana Spicer, Link, Meritor
WHEEL END COMPONENTS	Eaton, Haldex, Meritor, Spicer
WHEEL HUBS	Con-Met, Gunitite, <b>International</b> , Meritor
WHEELS: ALUMINUM	Accuride, Alcoa, <b>Fleetrite</b>
WHEELS: STEEL	Accuride

\* U.S. SUPPLIER ONLY

† CANADA SUPPLIER ONLY

# IT'S TIME TO BRING UPTIME TECHNOLOGY TO EVERYONE.



Customers count on Navistar® to deliver the uptime and efficiency required to be successful. With the largest and most comprehensive package of customer support services in the industry, Navistar helps you achieve more efficient repairs and maintenance, better life cycle value and an overall lower total cost of ownership — everything you need to help manage your operations and get the most from your vehicles.

## CONNECTION



A two-year Connection subscription now comes standard with all new International® LT® Series, RH® Series and LoneStar® models and is also available on all commercial truck models 2007 or newer.\*\* Connection enables increased uptime and lower operating costs by providing visibility with real-time vehicle health, repair and maintenance tracking, all within a single, intuitive portal. It's time to take control of your uptime.

## KNOWLEDGE



Knowledge solutions provide customers with access to detailed, VIN-based parts and service information.

- **Parts Information** — *(Formerly Fleet Parts Catalog Online)* Detailed parts catalog with illustrations and optional electronic ordering.
- **Service Information** — *(Formerly Fleet ISIS®)* VIN-specific service information resources for all Navistar vehicles.

## EDUCATION



Online customer education portals offer web-based courses to help customers keep their technicians up to speed on current technology. Courses are available for vehicle chassis and body, technology systems, engines and brake components.

\*\*Connection is offered with partnering telematics providers. Other terms and conditions may apply. See [oncommandconnection.com](http://oncommandconnection.com) for details.



## REPAIR ADVOCATE



Repair Advocate provides customers with total oversight of the repair experience to ensure that repairs progress as efficiently as possible. (Available for Class 8 highway trucks.)

## FLEET CHARGE®



A Fleet Charge program provides fleets with one open account for parts and service at all participating dealer locations across the United States, Canada and Puerto Rico. Fleets benefit from consistent parts pricing, consolidated billing and optional Emergency Breakdown Service (EBS).

## SERVICE PARTNER<sup>SM</sup>



The Service Partner program provides our fleet customers networkwide (United States and Canada) with fixed labor times for most common vehicle repairs. Available for all customers who qualify for Navistar's Fleet Charge program.

## PARTS RETURN PROGRAM



With the Parts Return Program, customers receive a credit to their Fleet Charge accounts for unused, surplus or obsolete parts from any supplier that are returned to Navistar! To earn the credit, Navistar and the customer agree to grow their parts business together.

For more details, contact your Navistar sales representative or [partsreturnprograms@navistar.com](mailto:partsreturnprograms@navistar.com).



[internationaltrucks.com](http://internationaltrucks.com)

[icbus.com](http://icbus.com)

All material in this literature is as accurate as known at time of publication, but is subject to change without notice. Fleet Charge, Fleetrite, International, Navistar, RENEWED and Service Partner are trademarks or registered trademarks of Navistar, Inc. All marks are trademarks of their respective owners.

© 2021 Navistar, Inc. All rights reserved. PBC-21-3502